

Joan Cooper? 1974?
1975

KIDSGROVE

TOWN



ROBERT DALE & CO.

(BUILDERS) LTD.

Linley Hall, TALKE, Staffs.

Tel. KIDSGROVE 3276/3737



**ESTATE DEVELOPERS
& CONTRACTORS**

LINWOOD PLANT LTD.
(Plant Hire)

**LINLEY PLUMBING
& HEATING LTD.**
(Plumbing & Heating
Engineers)

BUNGALOWS FOR SALE at :

**PARKVIEW off THE AVENUE
KIDSGROVE**

**RIDGEFIELDS, BIDDULPH MOOR
THE GREEN, YARNFIELD
Nr. STONE, STAFFS.**

**and
HARPFIELDS GREEN,
HARTSHILL,
STOKE-ON-TRENT**

The Town of

KIDSGROVE

STAFFORDSHIRE

The Official Guide

Fully Illustrated

Designed and Published by
THE BRITISH PUBLISHING COMPANY LIMITED
GLOUCESTER
Copyright

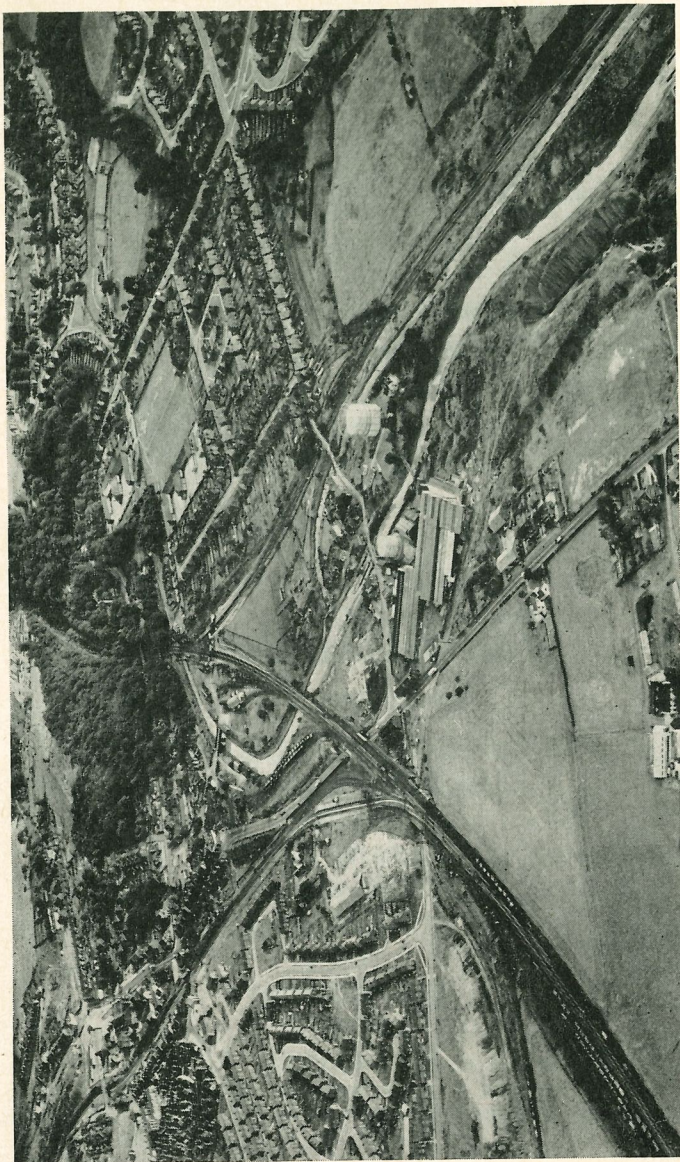


Photo by Aeroviews Ltd.

AERIAL VIEW OF THE DISTRICT

Copyright

Foreword

In introducing this new edition of a guide to Kidsgrove it is necessary to mention that the area has become part of the Borough of Newcastle-under-Lyme as a result of local government reorganisation.

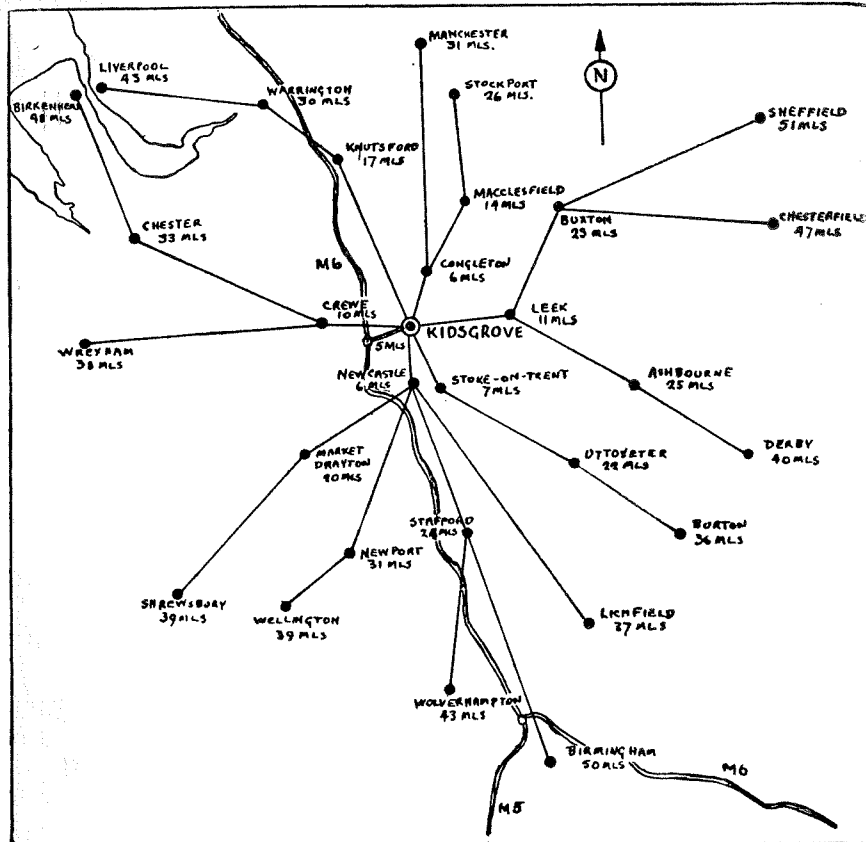
The town, however, remains a clearly identifiable geographical entity and a Town Council has been established under the Local Government Act 1974 which deals with matters of local interest and includes the publication of this Guide.

I am sure that this booklet will provide a useful source of information for visitors and new residents to whom I extend a warm welcome, and indeed to all those persons interested in the area which judging by the demand for previous editions are numerous and widespread.

JOAN COOPER

TOWN MAYOR

TOWN COUNCIL OF KIDSGROVE



Introduction to Kidsgrove

KIDSGROVE TOWN COUNCIL

Kidsgrove is a modern town of comparatively recent development which has been built on and around the site of an old North Staffordshire mining community. Traces of the remains of old colliery workings may still be found and of the old housing settlement, but these are rapidly being eliminated by landscaping and new development which has been energetically undertaken.

The Town is situated in North West Staffordshire on the Cheshire border and is part of the Borough of Newcastle-under-Lyme for local government purposes, but has a Town Council with the powers of a separate parish. On the eastern boundary the ground rises steeply to the first ridge of the Pennine foothills giving extensive views across the Cheshire plain to the west stretching away to the Welsh border forty miles distant.

In addition to the City of Stoke-on-Trent on the boundary Crewe is nine miles away to the west, and Congleton six miles north. The facilities of these towns and those of the Potteries are readily accessible. The district is well served in the matter of transport. Two main rail lines of London/Midland Region pass through Kidsgrove, one route being the Manchester, Stoke, Euston, and the other the Crewe, Stoke/Derby line. The local services on these lines are by diesel trains and are now both frequent and fast. The Potteries Motor Traction Co. Ltd. operate bus services throughout Kidsgrove and provide communication through the towns of Stoke-on-Trent and Newcastle-under-Lyme. Services also cover Alsager, Congleton, Crewe and Sandbach. Two main trunk roads, the A34 and the A50 pass through the district and provide ex-

cellent road communication. The M6 Birmingham/Preston Motorway passes within 3 miles of the town and there is a feeder road to it from Talke which provides easy access.

The most prominent feature and landmark is Mow Cop Tower or 'Castle' which with an area around it is preserved by the National Trust. It is 30ft high and 20ft. in diameter, situated on a rocky crest some 1,000 ft. high. The walls are 3 ft. thick and there is a wing wall with an archway giving the Tower the appearance of a ruined castle, although it is said to have been built as a folly. The ground falls steeply from the summit to an altitude of about 400 ft. at the edge of the Cheshire Plain. Other prominent features of the landscape are the Wedgwood Monument a large obelisk on high ground on the South Eastern boundary and an ornamental tower at Ravenscliffe. The latter has been the subject of controversy as to age and purpose. Expert opinion has now rejected theories that it was a mummer's tower of great antiquity.

The Town may now very fairly be described as a modern one, by far the largest part of the residential property having been built since the end of the second world war. This includes some 2,500 private dwellings, 600 erected by housing associations and approximately 1,800 Council houses managed by the Newcastle-under-Lyme Borough Council. The earlier post war council houses and all the 400 pre-war council houses have been extensively modernised and provided with central heating. Practically all the concentrated areas of nineteenth century cottages which formed the old town have now been cleared and replaced by modern development.

Kidsgrove was one of the pioneers in the reclamation of land made derelict by mining and industry, and most of the scars have been replaced by landscaped woodland.

A shopping development in the centre of the town is necessary to complement the expansion of the residential areas and to improve the appearance of cleared areas. New proposals for this development are currently under consideration by the Newcastle-under-Lyme Borough Council. Most of the Town Council area is subject to Smoke Control Orders and this together with the replacement of heavy industry by modern factories has virtually removed all question of air pollution for which at one time North Staffordshire had a bad reputation.

W. & A. LENCH BROS.

EST. 1946

Partners: W. Lench, A. Lench, J. W. Lench

REGISTERED PAINTING AND
DECORATING CONTRACTORS

QUOTATIONS FOR ARTEX PLASTIC CEILINGS
ON REQUEST

**Skellern Street, Butt Lane
Kidsgrove, Stoke-on-Trent**

Telephones: KIDSGROVE 3449
STOKE-ON-TRENT 87907



*Former Ballroom and Entertainment Centre
Bourne Cottage. A "listed building" now being
fully restored.*



Historical Notes

Until the eighteenth century the land which now comprises Kidsgrove consisted of parkland with extensively wooded areas. Such few cottages as there then existed were not sufficiently concentrated to constitute a village.

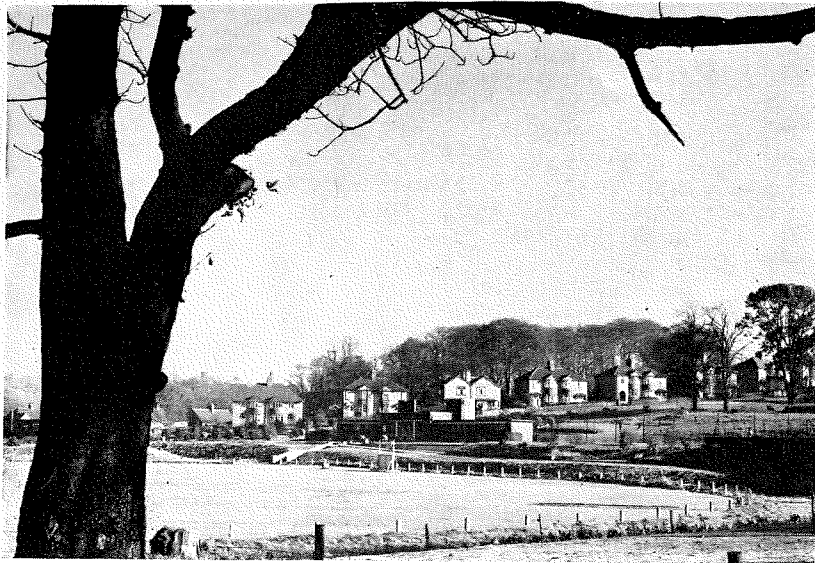
The development of the pottery industry in nearby Stoke-on-Trent in the early 1700's led to a demand for improved transport and brought firstly the canals and then the railway to the Kidsgrove area. In order to link the rivers Trent and Mersey it was necessary to complete a tunnel 1.64 miles long under the Harecastle Ridge at Kidsgrove. James Brindley the eccentric, but brilliant homespun engineer undertook the project which took eleven years to complete. The tunnel through which barges were legged is still in existence but no longer navigable. A larger tunnel was constructed by Telford in 1827 but this one also has recently fallen into disuse, but is being restored.

Settlements grew up around the canal wharves and exploitation of the mineral wealth, first iron then coal quickly led to an expansion of population, and the nineteenth century town, now largely replaced, grew up.

It consisted mainly of small cottages said to be erected at a cost of £75 each, together with one or two country houses of which Clough Hall was the most prominent and a few farmhouses, some shops and a market.

The Church of St. Thomas was built in The Avenue, Kidsgrove in 1837 and consists of chancel, nave, aisles and an embattled western tower containing a clock and 6 bells. The chancel was erected from designs by Sir Gilbert Scott.

The parish of Talke was added to Kidsgrove in 1932 and has a rather longer history. An ancient stone cross



*Clough Hall Park, Kidsgrove
Canal Wharf, Hardingswood*



which has been restored in the village is dated 1253 and denotes an ancient market site. The parish originally comprised four villages Talke Pitts, Talke, Talke o'th Hill and Butt Lane which have now largely coalesced. In Congleton Road, Butt Lane the birthplace of Reginald Mitchell co-designer of the "Spitfire" aircraft is commemorated by a plaque unveiled at a ceremony in 1951 by Air Marshall R.L.R. Atcherley one time holder of the world air speed record.

The Church of St. Martin's at Talke is the oldest in the district having been erected in 1749 on the site of a former older church whose possessions it is recorded were surrendered to Cromwell's Royal Commissioners in 1553. The present church plate includes a pre-formation paten, a chalice presented in 1728, and a flagon of 1863.

The parish of Newchapel at the other end of the district includes the hillside of Mow Cop rising sharply 1,100 ft. from the plain surmounted with its ornamental tower. The slopes of Mow Cop are well known for the occasion of the foundation of Primitive Methodism in 1807 on the 31st May and equally for the centenary celebration in 1907 when many thousands from all over the world assembled there.

St. James Church at Newchapel was built in 1880 as a memorial to James Brindley the engineer who designed the first Harecastle canal tunnel and whose remains are interred in the Churchyard there which was the site of an earlier Church.

The district like most mining areas has had its share of disasters and 91 lives were lost in 1866 and 41 in 1875 in mines at Talke and accidents of lesser scale have occurred in the present century, but with the cessation of underground mining in the district this is happily a danger removed.

Following the close of the first world war Kidsgrove acquired a reputation as an entertainment centre when

a mansion at Clough Hall was developed into a ball-room for 2,000 people with attendant facilities. The grounds included a menagerie, fairground, boating lake and gardens. The popularity of the former Clough Hall over many years failed to survive the notoriety of a murder which was committed in the grounds and the premises were demolished in 1930.

The economic depression of the late 1920's and 1930 hit North Staffordshire badly, and particularly Kidsgrove. Severe unemployment, a dearth of opportunity and stagnation of development had a crippling effect which was not rectified until after the end of the second world war.

An energetic drive for housing both private and council built, together with the introduction of modern industries commenced a rejuvenation of the town into the thriving community it has now become.

 **Fradley**

F. FRADLEY & SON
Builders

Chetwyn House

Northwood Lane

CLAYTON

Stoke-on-Trent, Staffs.

Industry

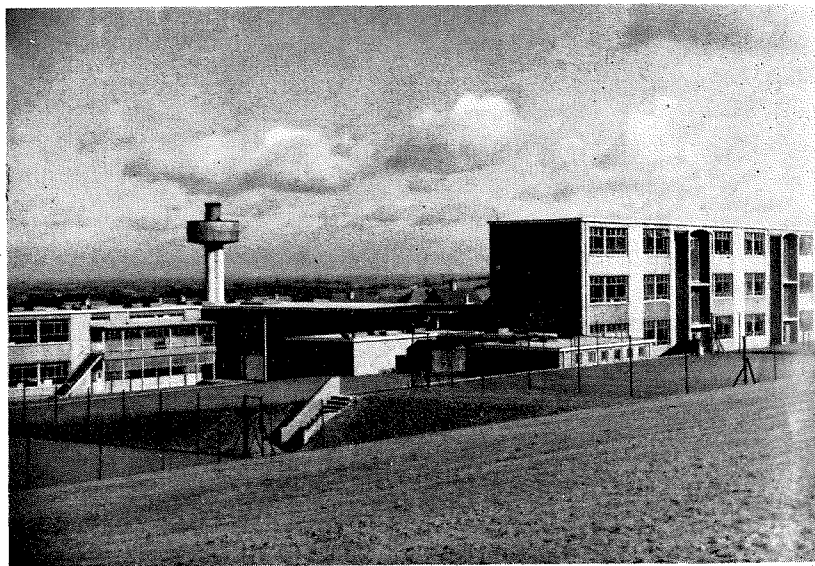
The excellent road and rail communications available at Kidsgrove are extremely advantageous for the location of industry. At the end of the 1939/1945 war it became apparent that new industries were desirable to supplement the basic pottery and coal mining on which the whole of North Staffordshire had for so long relied. In 1948 a new industrial estate was commenced between the A50 and A34 trunk roads which is now called the Nelson Industrial Estate, and this estate which is now completed has its major factories of G.E.C. Elliot Automation engaged in the electronics industry, and Internation Computers Limited concerned with computer services. There are also sizeable firms engaged in the various aspects of the textile industry, and a number of smaller firms engaged in many other occupations.

A further industrial estate of some 50 acres is now under construction at Talke. This estate is within a short distance of a feeder road to the M6 motorway and it will include in addition to industrial buildings a large out of town hypermarket which is anticipated to open before the end of 1975. Walker Century Oils Limited have already a large oil storage depot within this estate and the available sites are being rapidly filled by new undertakings.

The Newcastle Borough Council are making a further large area available for industrial development in this vicinity just outside the Town Council's area, so that sites can continue to be provided. There are a number of other local industries located at different parts of the district, these include the Premier Artificial Stone Company Limited who manufacture precast concrete slabs, kerbs, etc., Hillside Foundry Company Limited, general iron founders, North Staffs. Hydraulics and Walker and Squires Sheet Metal Works. Mathey Printed Products Limited, a subsidiary of

Johnson Mathey Limited have an expanding factory in the district making pigments for the paint and plastic industries and ceramic colours. W.A. Lowe and Company and Pirie Sons and Company Limited are other firms engaged in the textile industry. There are also works producing bricks and tiles. Coal mining in the Town Council area has long since ceased to be a prominent feature, and is now confined to very minor surface extractions on one or two small sites. The closure of the Birchenwood Gas and Coke Company engaged in solid fuel production has marked the end of heavy industry in the district, but with a resultant improvement in amenity.

Maryhill Comprehensive School



Public Services

EDUCATION

MARYHILL COMPREHENSIVE SCHOOL

Headmaster, Mr. W. Reddish, B.Sc.

The school was first opened as a small Grammar School in 1960 and enlarged as a Comprehensive School in 1963. Further workshops and practical rooms were added two years ago. The school stands on a site of 8 acres and has playing fields of 17½ acres. Teaching accommodation includes a large hall with fully equipped stage, gymnasium, 6 science laboratories, well equipped practical rooms for Handicraft and Home Economics and for Art and Craft, a modern Language Laboratory, Library and spacious classrooms, staffroom and administration offices.

The school has approximately 850 pupils in the age range 11-18 and a staff of 49. The comprehensive range of courses for pupils of all abilities includes those leading to Certificate of Secondary Education and General Certificate of Education at all levels. Each year pupils leave the Six Form to enter Universities and Colleges of Further Education and to begin courses of professional training.

Out of classrooms activities are an essential part of the school's work and in addition to games and athletics the School Outdoor Club and Dramatic Societies are especially active. A Parent Teacher Association formed in 1961 continues to give substantial support to the school.

CLOUGH HALL COMPREHENSIVE SCHOOL

Headmaster Mr. J. O. Murphy

Clough Hall is a fully developed Comprehensive School which provides courses for over a thousand boys and girls from 11 to 18 years of age. The most modern facilities are available for the teaching of all subjects, and every effort is made to arrange courses which are suited to the abilities and interests of the individual pupils. Every year a large number of pupils

enter for the General Certificate of Education at 'O' and 'A' level and for the Certificate of Secondary Education. Many students proceed from the school to Universities, Colleges of Education, Polytechnics, etc.

The accommodation of the school has recently been modernised. A completely new central section is in use, with well-equipped laboratories for all branches of Science, and a Language Laboratory of the latest design. Further building is approaching completion which will provide a magnificent joint user sports complex, containing a large Sports Hall, a Swimming Pool and a smaller training pool. The Sports Centre will also be available to the general public outside school hours.

New playing fields have now been completed alongside the Newcastle Road at Talke, consisting of seven pitches for hockey and football, with a running track, cricket squares, etc. etc.

There is a strong and active Parent-Teacher Association, and the interest of parents in the work of the school is warmly welcomed.

Primary Schools

There are 12 Primary Schools in the district. Four are new or have had extensive additions or improvements: Dove Bank County Primary; Kinnersley Memorial Church of England Junior (Juniors only); Wade Memorial Church of England Infants (Infants only); Maryhill County Primary; The Reginald Mitchell County Primary, Butt Lane; Hill Top County Primary, Talke; Springhead County Primary, St. Martin's Church of England Infants, Talke (Infants only); St. Saviour's Church of England, Talke; Thursfield County Primary, Harriseahead; Castle County Primary, Mow Cop; St. John's Roman Catholic School, Gloucester Road.

Nursery Schools

Kidsgrove Nursery School, Wesley Street, Kidsgrove; Banbury School, St. Saviour's Street, Butt Lane.

Further Education

Kidsgrove Evening Institute is accommodated at Clough Hall Comprehensive School with additional classes at the Maryhill Comprehensive School, Thursfield School, Harriseahead, and the Reginald Mitchell School, Butt Lane and other centres. It provides a wide range of commercial, technical and recreational classes. Students take the examination of the Royal Society of Arts, Union of Educational Institutions, and those providing a link with and set by the North Staffordshire Technical College. Detailed information can be obtained from the Head Teacher, Mr. R. Johnson (Tel. 3281 Evenings) at Clough Hall Comprehensive School.

A wide variety of part-time day release classes and full-time day classes is available to the area at the North Staffordshire Technical College, College Road, Stoke-on-Trent. There are departments in engineering, mining, ceramics, chemistry, physics, and catering and food technology. Facilities are also available at Newcastle College of Further Education at Newcastle-under-Lyme.

Prospectuses are available at the various centres, Kidsgrove Town Hall and Public Libraries.

For information concerning Further Education outside the area contact the Area Youth and Community Officer, Kidsgrove Town Hall, telephone 2254.

YOUTH AND COMMUNITY SERVICE

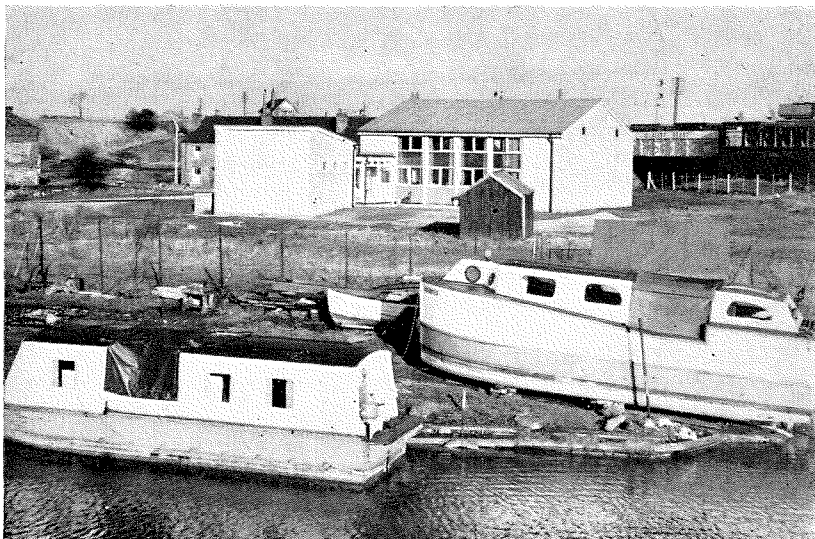
Youth Groups

Kidsgrove is part of the Youth and Community Area known as North Trent (which serves Tunstall, Bid-dulph, Chell, Brown Edge and Goldenhill). The main clubs are at Clough Hall, Maryhill, Talke, Whitehall Avenue, and Harriseahead.

There are voluntary groups also, including Scouts, Guides, Boys Brigade, Sports Clubs, Lads and Dads, Church Clubs, Girls Brigade, Red Cross, St. John Ambulance and Sea Cadets etc. These groups operate their own programme, but in addition there is an Area programme of events and a County programme as well.



*A view of Talke Pits
Canal Wharf at Hardingswood, Kidsgrove*



For further information regarding Youth Work please contact the area Youth and Community Officer, Kidsgrove Town Hall, telephone 2254.

Duke of Edinburgh Award Scheme

This scheme in operation nationally, has a very strong following in Kidsgrove. The Award Committee has been very successful in encouraging young people taking the awards, which have been gained at all levels.

For further information please contact the Area Youth and Community Officer, Kidsgrove Town Hall, telephone 2254.

Careers Information

The Staffordshire County Council Education Committee is responsible for the Careers Advisory Service and for this purpose a Careers Office is attached to the Clough Hall Comprehensive School to serve all young people in the Kidsgrove area. Since the re-organisation of Local Government in 1974, the Careers Advisory Service has provided a vocational guidance service for people attending all educational establishments except universities, and an employment service for people leaving them.

The staff of the Service include officers who advise young people about further and higher education and employment at all levels, thus young people in the complete range of ability are catered for. Help is given to employers to recruit suitable employees and careers office staff visit firms to keep up to date their knowledge of the employment field, to discuss training schemes etc. and any problems which employers may have concerning recruitment. When giving advice about further education, full-time and part-time, many courses locally are considered but information is also held concerning courses available nationally. Young people in the area are well served by the North Staffordshire Polytechnic, the Newcastle College of Further Education, the Elms Technical College, the Cauldon College of Further Education, the Leek College

of Further Education and the Northern College of Further Education, Burslem. At these establishments there are educational and vocational/professional courses from craft level to degree level.

With regard to employment opportunities in the area, industry is not highly concentrated. There are several large and some smaller engineering firms, the larger ones recruiting people with various educational qualifications from those suitable for semi-skilled work through a range to those who have degrees.

As many boys are interested in engineering of one kind or another some have to look outside the area for employment and travel to Stoke-on-Trent, Newcastle and Crewe. For those young people who wish to obtain employment in the clothing manufacturing industry there are usually more than enough suitable openings. Near to the area there are openings at all levels in the coalmining and pottery industries, training lasting from a few weeks to a number of years depending on educational qualifications and the particular job. As far as retail distribution is concerned there are, for its size, a good number of shops in the area but these are mainly the smaller type. For large stores people have to travel to larger shopping centres such as Hanley, although a new hypermarket is opening in the area.

Again, there are not many large offices in the area, the larger ones being those at the large industrial concerns and there are few openings in professional offices. For employment with Nationalised Industries, Local Government, Civil Service, Banking and other professional offices people usually have to be prepared to travel outside the area but there is easy access to neighbouring districts so residents of Kidsgrove should not have much difficulty in obtaining suitable employment within daily travelling distance.

HEALTH SERVICES

The Staffordshire Area Health Authority provides the following services in the district.

Care of Mothers and Young Children

Infant Welfare Clinics are held at Health Centre, Market Street, Kidsgrove, Long Lane, HARRISEAHEAD and Cross House, Talke. In addition to the usual functions carried out at the Infant Welfare Centres the Health Authority provides for the sale of infant and welfare foods. Mothercraft and Relaxation classes for expectant mothers are held on Wednesday afternoons weekly at the Kidsgrove centre and on Wednesday afternoons weekly at the Talke centre.

Midwifery Service

Four midwives are at present employed in the Town Council Area. The services of these midwives are available to all expectant mothers.

Health Visiting Service

The two Health Visitors in the Town Council Area are trained nurses with additional qualifications for their work which includes visiting mothers and children up to the age of five years in their homes, care of babies and young children at the Infant Welfare Centres, and care of old people, and care of school children under the School Health Service.

Home Nursing Service

There are four district nurses in the Town Council Area and their services are normally available at the doctor's request.

Vaccination and Immunisation

Facilities are available through family doctors, Infant Welfare Centres and Schools in the Town Council Area for immunisation against Diphtheria, Whooping Cough, Tetanus, Poliomyelitis, and Measles. Immunisation against Rubella (German measles) is now avail-

able for girls between 11 and 14 years of age. B.C.G. immunisation against Tuberculosis is available under the school Health Service. All immunisations are free of charge.

Other Services

These include the provision of an ambulance service, a chiropody service for handicapped persons, old people, expectant mothers and school children, a nursing comforts depot where medical and nursing equipment is available.

Health Centre

A health centre has been established at Market Street, Kidsgrove, which provides comprehensive medical services.

Doctors in the Town Council Area

Drs. D. G. French, A. F. Hickson and J. Whalley:
Kidsgrove Health Centre, Market Street, Kidsgrove,
Stoke-on-Trent.
Telephone: Kidsgrove 4221.

Drs. J. C. Friel, M. E. Lloyd, H. J. Moss, and
S. Sharaf-Uddin:
Kidsgrove Health Centre, Market Street, Kidsgrove,
Stoke-on-Trent.
Telephone: Kidsgrove 4221.

Dentists in the Town Council Area

Mr. R. O. Whalley:
79, Liverpool Road, Kidsgrove, Stoke-on-Trent.
Telephone: Kidsgrove 2520.

LIBRARY FACILITIES

Staffordshire County Library, Newcastle Area, provides the following services in the area.

Kidsgrove

Central Library, Meadows Road, Kidsgrove. Tel. 2445.

Open

9-1 2-6 Monday.
9-1 2-8 Tues. and Friday.
9-1 2-5 Wed., Thurs., Sat.

Adult, Junior and Reference Depts., Meeting Rooms, available for Lectures, exhibitions etc.

Talke

Talke Library, Chester Road, Talke Pits. Tel. 2200
Adult, Junior and Reference Depts.

Open

A caravan library service operates as follows:

Monday. Rookery, The Stores. 10.30—1. 2—6.

Wednesday. Harriseahead, Clinic, Holly Lane.
10.30—1 2—6.45.

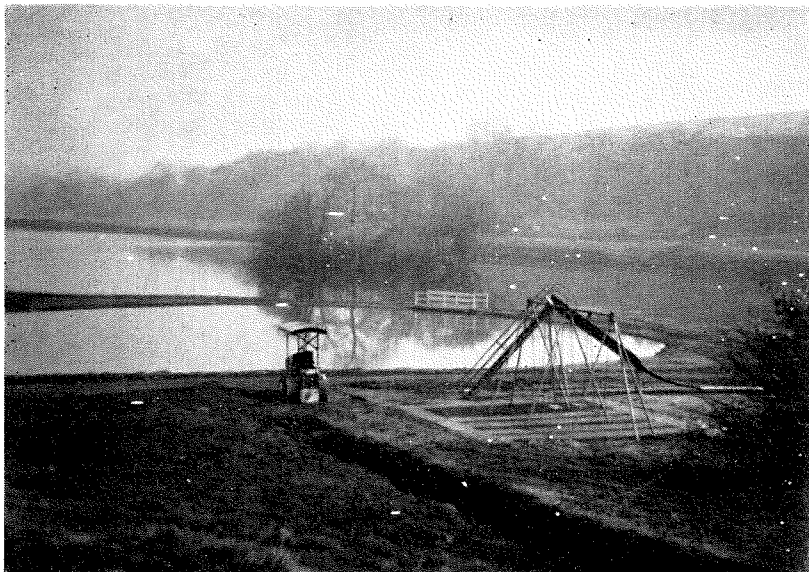
In conjunction with Cheshire Library a mobile van visits various shops — Dales Green and Mow Cop weekly on Wednesdays. Details available at Kidsgrove Library.

Citizens Advice Bureau

The Kidsgrove Citizens Advice Bureau is a nationally registered bureau staffed by trained and experienced voluntary workers. It is independently run and is able to provide a comprehensive information and advice service. The bureau deals with a large volume of enquiries on almost any conceivable subject. The bureau is at 38 Market Street, Kidsgrove and is open on Mondays to Fridays from 2.00 p.m. to 4.00 p.m. and on Saturday mornings.



*Games Hall, Kidsgrove Sports Centre
Play Area for Children, Bathpool*



Sport and Recreation

The public recreation facilities in Kidsgrove are now administered by the Newcastle Borough Council, and these include:

Kidsgrove Sports Centre

The Sports Centre is under construction at Fourth Avenue, Kidsgrove within the grounds of the Clough Hall Comprehensive School. The facilities which will be available include a swimming pool 25 metres by 12.8 metres, together with a teaching pool of 12 metres by 7 metres. The complex includes a sports hall of 36 metres by 18 metres together with a sauna suite and solarium, there will be a licensed bar and club room. Provision is being made for catering, and squash courts are planned for future construction. It is anticipated that the sports hall will be open to the public before the end of 1975, and will be able to cater for a wide variety of sport and other social entertainments. The construction of the swimming pool is not advanced to the same extent, but it is hoped that this will be opened by late 1976.

Clough Hall Park

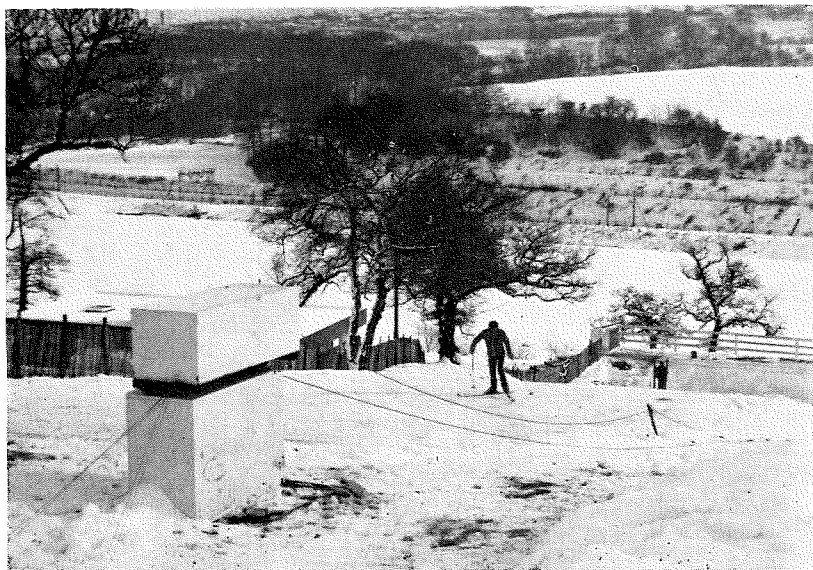
The main recreational park is at Clough Hall, Kidsgrove. This park has been long established and includes a cricket field together with hard tennis courts, putting green and there are also two bowling greens. There is a pavilion which incorporates a bandstand and changing accommodation. An area of children's playing equipment is also provided. Adjoining the park is an enclosed football ground which is at present leased to the Kidsgrove Athletic Football Club.

Newchapel Playing Field

A new playing field has recently been developed at Newchapel to meet the needs of the growing population in this area. It has an all weather playing surface and floodlight facilities are available.



*The new Pavilion and Ski-Lodge, Bathpool
The Artificial Ski Slope*



Bathpool Park

This is an extensive area of natural park and woodland of which about 165 acres are available to the public. It also includes a lake of some 11 acres which is used for canoeing, sailing and angling. By far the largest part of the park is given over to walks and picnicking for which various forms of forest furniture have been provided. In addition, however, an area has been developed for recreation. There are two football pitches and a multi-purpose all weather games area which is provided with floodlighting. The Ski-Centre is also located in this park and this offers a ski-run of 250ft. covering an area of 2,500 sq. yds. This slope is provided with floodlighting and also a ski-tow. A pavilion ski-lodge is sited near by from which equipment can be obtained. It includes, changing accommodation and a refreshment lounge.

Other Playing Fields

There are a number of small playing fields spread throughout the district at Mow Cop, HARRISEAHEAD, Rookery, Butt Lane and Talke. These have playing facilities for children. There are also a further five public football grounds located in HARRISEAHEAD, Talke, Whitehill and Kidsgrove. There is also a Company sports field and a number of private bowling greens.

Entertainment

The Victoria Hall, Liverpool Road, Kidsgrove which is administered by the Kidsgrove Town Council is a popular venue for dancing and other entertainments. There is a stage which can be used for plays, concerts and theatrical productions. The Masonic Hall also at Liverpool Road, Kidsgrove is available for smaller functions and catering. The Talke Village Hall at High Street, Talke Pits and the Thursfield Community Centre at HARRISEAHEAD are both newly erected buildings run by voluntary organisations for the benefit of residents in these areas. There are also a number of modern social clubs providing a diversity of entertainment.

The Music and Arts Society of Kidsgrove M.A.S.K. is a comparatively newly formed organisation with a large membership which is open to all at a nominal subscription. The Society embraces a wide range of activities and includes an Art Group, Music Group and Drama Group. The Arts Group meets on Mondays and covers painting and all forms of visual arts in a practising manner from the beginner stage. The Music Group meets on alternate Mondays and Thursdays and the Drama Group on Tuesdays. The Society holds open meetings at various venues approximately every six weeks at which there are demonstrations and entertainment often by distinguished performers. The Victoria Theatre Group provide first class professional drama at Hartshill and are well known for a number of television productions. Major cinemas and live entertainment establishments are situated in Hanley in the City of Stoke-on-Trent some five miles distant.

Other Facilities

Within Kidsgrove and perhaps a surrounding radius of ten miles there are very few leisure activities that cannot be followed. The grounds of Stoke City Football Club, Port Vale Football Club and Crewe Football Club are within easy distance for followers of Association Football. There are many amateur clubs and leagues operating in the district, Kidsgrove Athletic F.C. is the principal club in the town and have an enclosed ground at Clough Hall Park. Kidsgrove Cricket Club also have their ground at Clough Hall Park and they play in the North Staffordshire League. Minor counties cricket matches are also often played in the City of Stoke-on-Trent. Lawn Tennis is represented by Clough Hall Tennis Club who play in the Stoke-on-Trent City and Suburban League. Rugby Union football is played at a number of schools in North Staffordshire. The principal club is Stoke-on-Trent R.U.F.C. and there are several good local club sides.

Good covered swimming pools are available in the

Borough of Newcastle and also at Biddulph, Congleton and Crewe. There is an open air swimming pool in beautiful surroundings at Trentham in the City of Stoke-on-Trent and also another at Market Drayton. There are sailing clubs at Rudyard Lake and also at Redesmere in Cheshire and limited facilities for training are available at Bathpool. A lot of voluntary work has been put in on local canals to improve their navigability for boating and a rally of boats was recently held in the district to publicise this facility.

A new municipal golf course of 18 holes has been provided by the Borough of Newcastle-under-Lyme, and is open to the general public. Members clubs are also available at Newcastle, Burslem, Congleton, Crewe, Trentham, Wolstanton and Astbury.

A well known national hunt race course is established at Uttoxeter where there are frequent meetings. Horse riding is becoming very popular in the district and there is a school at Goldenhill, Kidsgrove, and also a number of clubs and stables.

Motor Sport and motor cycling are provided for. There is speedway and carting at Chesterton in the Borough of Newcastle and motor cycle scrambling takes place at a number of venues in the district. Oulton Park the nationally known circuit is about twenty miles distant.

Angling is, of course, one of the most popular sports and there is a club which uses the water at Bathpool, and a number of other clubs in the surrounding district.

Pigeon flying is a notable North Staffordshire pastime. There are a number of badminton clubs, and with the opening of the Kidsgrove Sports Centre better facilities will become available for this and other athletic indoor games. In addition to the public facilities there are a number of crown green bowling clubs. For

Methodist

Central Methodist, The Avenue.
King Street, Talke Pits.
Chapel Street, Butt Lane.
High Street, Newchapel.
Balls Bank, Whitehill, Kidsgrove.
Chapel Lane, Harriseahead.
Chapel Bank, Mow Cop.

Baptist

Church Street, Butt Lane.

Christian Brotherhood

Ebenezer Hall, Banbury Street, Butt Lane.

Salvation Army

New Headquarters, Heathcote Street.

Pentecostal Mission

Mow Cop

POLICE STATION: Liverpool Road.

POPULATION: 23,180 Est. 1974.

RATEABLE VALUE: £2,001,812.

RATES: 66p. Domestic 47.5p. 1975/76.

REGISTRAR OF BIRTHS, DEATHS AND MARRIAGES: Infant
Welfare Clinic, Liverpool Road.

YOUTH EMPLOYMENT CENTRE: Clough Hall Compre-
hensive School.

CITIZENS ADVICE BUREAU: 38 Market Street, Mon.—
Friday 2—4 p.m. Sats. morning 10—12 a.m.

Other Organisations

ROTARY CLUB OF KIDSGROVE: Masonic Hall (meets
Wednesdays 1 p.m.).

WOMEN'S ROYAL VOLUNTARY SERVICE: W.R.V.S. Centre,
Congleton Road, Butt Lane.

TOC H: c/o Kidsgrove Library.

MASK: Music and Arts Society of Kidsgrove, Secretary
E. Dale, 72, Clough Hall Road, Kidsgrove.

KIDSGROVE TALKE & DISTRICT BRANCH: Royal British
Legion, Secretary, N. Langford, 68, Cedar Avenue,
Butt Lane.

OPEN HERE FOR STREET PLAN & INDEX OF KIDSGROVE

**BOOTH & JONES
(Kids.) LTD.**

TEL. 2409 & 5784

**113 Congleton Road
Butt Lane, Kidsgrove**

**TELEVISION and RADIO
SPECIALISTS**

RENT OR BUY

BOTH COLOUR AND BLACK & WHITE

ALSO:

**COMPLETE HOUSE
FURNISHINGS**

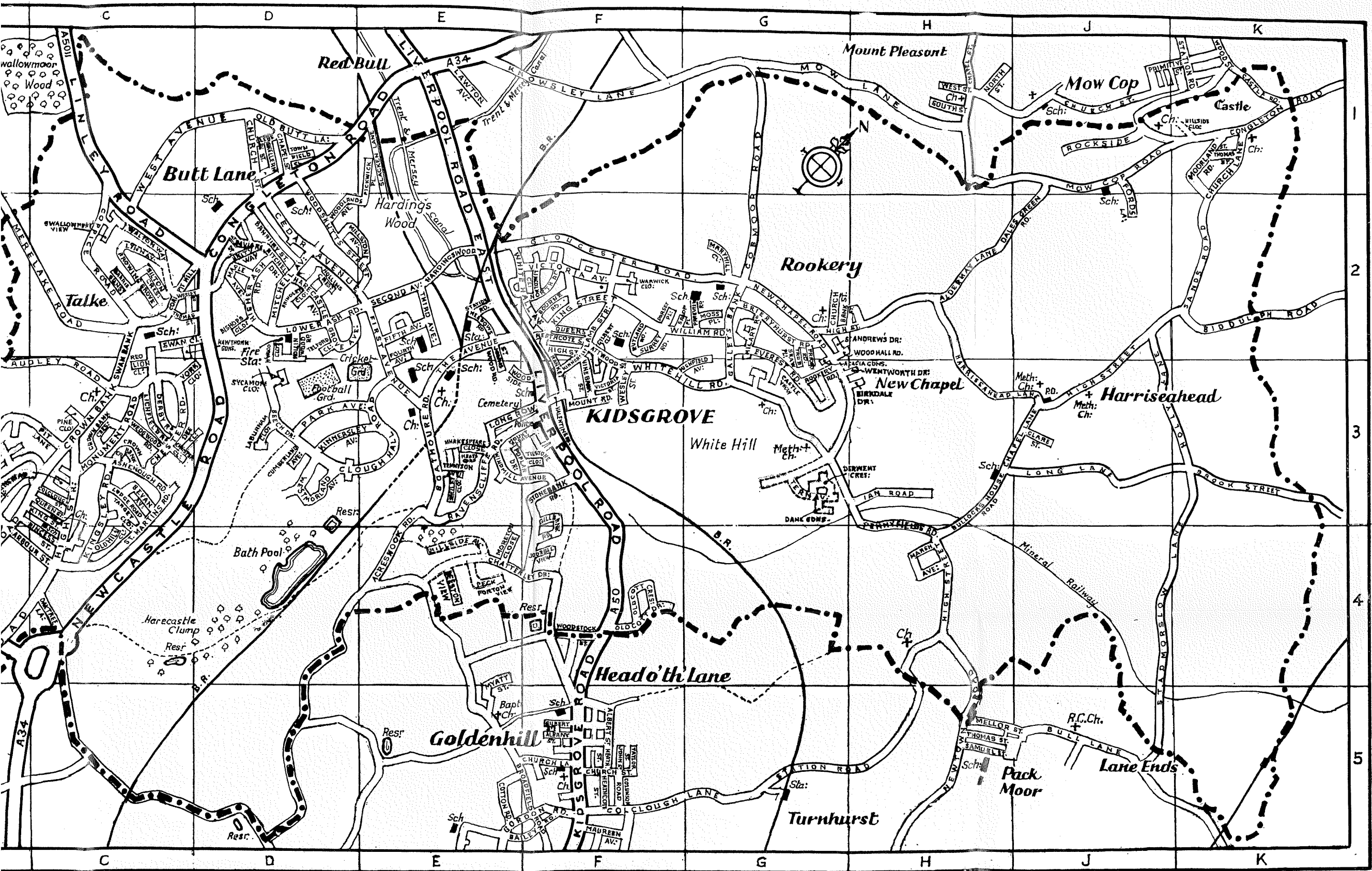
**FURNITURE · CARPETS
ETC.**

at

GOOD CASH DISCOUNTS

ESTIMATES FREE

H.P. TERMS AVAILABLE ON ALL GOODS



EVERYTHING FOR THE HOME !

ERIC ALCOCK LTD.

59 Liverpool Road, Kidsgrove

COMPLETE HOUSE FURNISHERS

See Our Extensive Range of

3-PIECE SUITES - BEDROOM FURNITURE
CHINA CABINETS - HALL WARDROBES
KITCHEN FITMENTS - OCCASIONAL TABLES
FLOOR COVERINGS - RUGS - CARPETS
BEDDING - MATTRESSES - ETC.

Cash or Confidential Terms to suit You !

Phone : KIDSGROVE 2714

ALWAYS FIRST WITH THE LATEST . . .

in HOME ENTERTAINMENT and
the newest ELECTRICAL AIDS
COLOUR TV RENTALS

ERIC ALCOCK LTD.

9 THE AVENUE
KIDSGROVE

26 LAWTON ROAD
ALSAGER

Phone 2714

Phone 3073

Service Dept. 4 Meadows Road, Kidsgrove. Phone 3788

Agents for all leading Manufacturers

TELEVISION - RADIO - TAPE RECORDERS

STEREOGRAMS - RECORD PLAYERS

WASHING MACHINES - CLEANERS