



ROBERT DALE & CO.
(BUILDERS) LTD.

Linley Hall, TALKE, Staffs

Tel. KIDSGROVE 3276/3737



ESTATE DEVELOPERS
& CONTRACTORS

LINWOOD PLANT LTD.
(Plant Hire)



LINLEY PLUMBING
& HEATING LTD.
(Plumbing & Heating
Engineers)

Bungalows For Sale at -

PARKVIEW off THE AVENUE
KIDSGROVE
RIDGEFIELDS, BIDDULPH MOOR
THE GREEN, YARNFIELD
Nr. STONE, STAFFS
and
HARPFIELDS GREEN,
HARTSHILL,
STOKE-ON-TRENT

The Urban District of

KIDSGROVE

STAFFORDSHIRE

The Official Guide

Fully Illustrated

Designed and Published by
THE BRITISH PUBLISHING COMPANY LIMITED
GLOUCESTER
Copyright

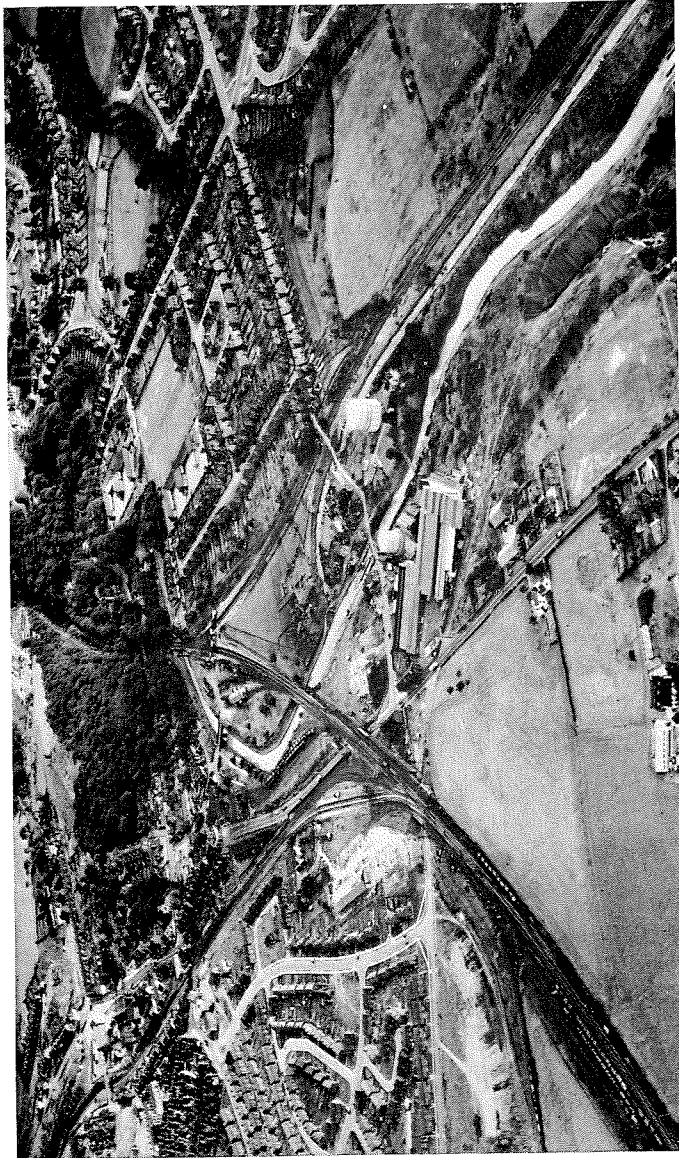


Photo by Aeroviews Ltd.

AERIAL VIEW OF THE DISTRICT

Copyright

Foreword

This latest edition of the Kidsgrove Town Guide will be the last to be issued by the Urban District Council, for in 1974 the area will be merged with that of Newcastle Borough and Newcastle Rural District Council.

I hope however that this little booklet will be of assistance to people who have business of any sort in this area, or who wish to visit or take up residence and are thus seeking information.

Kidsgrove is a rapidly expanding town with much new building.

A lot has been done in recent years to improve the amenity and appearance of the district and visitors should find many attractive features.

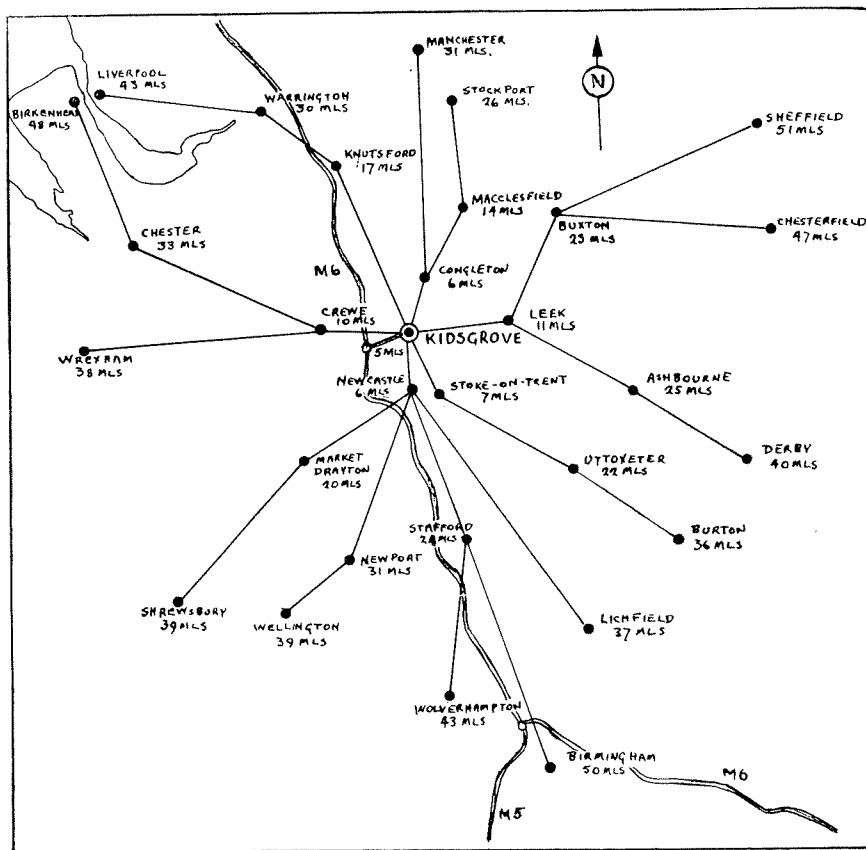
On behalf of the inhabitants of the town I offer a sincere welcome to all who come here, confident that this will be echoed individually by our residents.

FRED PETTIT

CHAIRMAN OF THE KIDSGROVE

URBAN DISTRICT COUNCIL

March, 1973.



Kidsgrove Urban District Council

KIDSGROVE PAST

There is very little early recorded history of Kidsgrove as a populated area. The first records show that the district was mainly parkland and part of the Estate of Henry de Alditheley of Audley. It was not until the late 18th Century with the commencement of the Industrial Revolution that the town began to develop. The concentration of the pottery industry and the opening up of the North Staffordshire Coalfield led to demands for improved means of transport to seaports. Josiah Wedgwood, one of the great pioneers of the pottery industry supported a proposal to construct a canal from North Staffordshire to the sea. Before this project could be successfully completed it was necessary to overcome the great difficulty of a tunnel through the Harecastle Ridge at Kidsgrove. James Brindley an engineering genius of the time, succeeded in making a tunnel through which barges were legged. This tunnel, although disused now for many years, is still in existence. A larger tunnel was constructed in 1827 by Telford, another famous engineer. The construction of the canal brought population and industry to Kidsgrove for the first time. It became possible to work the coal seams in the district and a substantial coal mining industry was built up. Blast furnaces were erected and a large chemical plant was developed during the 19th century. These are now defunct however and mining is no longer carried out in the district.

Kidsgrove consists of four ecclesiastical parishes—Kidsgrove, Newchapel, Mow Cop and Talke. Newchapel and Mow Cop, like Kidsgrove, have very little early recorded history and the development of these parishes was coincident with that in Kidsgrove. It was at Mow



VIEWS OF QUEEN STREET, TALKE PITS
BEFORE AND AFTER REDEVELOPMENT



Cop on the 31st May 1807 that Primitive Methodism was founded and a commemorative plaque is now erected there. James Brindley who was responsible for the canal tunnel and many other engineering feats, is buried in the churchyard of St. James, Newchapel. The parish of Talke was added to the Urban District of Kidsgrove in April, 1932, it previously having formed part of the Audley Urban District which went out of existence. It originally consisted of four villages—Talke Pits, Talke o' th' Hill, Talke and Butt Lane, which would seem to have been populated from Anglo Saxon times although it is first referred to in 1253 in a Charter of Free Warren granted by Henry III to James de Audley. The Charter gave a right of market to be held in the Manor Talke in each week. The market site was denoted by an ancient stone cross which was restored in 1887 and is still in existence.

Talke was the birthplace of Reginald Mitchell the aeronautical engineer who was one of the principal designers of the "Spitfire" aircraft. He was born in Congleton Road, Butt Lane, and his birthplace is marked by a plaque which was unveiled in 1951 by Air Marshal R. L. R. Atcherley, at one time holder of the world air speed record. The Parish Church of Talke is the oldest still existing in the district having been built in 1749, and it was enlarged in 1833. This Church had replaced another earlier Church which had existed in Talke in the early 16th Century and which history records was subjected to the depredation of Cromwell's Commissioners, who removed property and vestments of the Church. The present Church retains some old plate which includes a paten of the Stuart period, and a chalice inscribed with the date 1728. The Parish Church of Kidsgrove is St. Thomas's which was founded by Thomas Kinnersley of Clough Hall in 1837. The Chancel was added in 1857 from a design by Sir Gilbert Scott, and is dedicated in memory of the founder. Other Churches in the district are of later origin. St. James's Church at Newchapel was built in 1880 as a memorial to Brindley, but it was the site of earlier Churches which

had at one time served not only Newchapel but also Kidsgrove and Mow Cop. The Churchyard there was first consecrated in 1718. St. Thomas's, the parish Church at Mow Cop was erected in 1843 and there are many Methodist Churches and Chapels throughout the district mainly erected in the 19th Century. The Roman Catholic Church in Kidsgrove was founded by Sir William Craig of Alsager in 1893.

There are many historical features in the district which repay a visit. At Mow Cop, which rises very steeply from the plain to an altitude of 1,100 ft. above sea level, is erected a tower known as Mow Cop Castle. This tower has the appearance of the remains of a Castle stronghold, standing as it does at such a commanding point, with a wing wall through which there is an archway. It is fairly well established however that the building is not of ancient origin and is thought to have been erected as an ornamental ruin. The tower and the land around it is now owned by the National Trust and is a popular place for visitors to the district and from which a magnificent view over the Cheshire Plain can be obtained. When the weather is clear, the view extends as far as the River Mersey to Delamere Forest and the hills of Wales and Shropshire. Near Mow Cop Castle is to be found an immense rock projection some 65ft. high. Seen from a distance it has the rough shape of the head and shoulders of a man and it is well known as "the Old Man of Mow". Away on the south eastern boundary of the district stands the Wedgwood Monument, a well known landmark in the form of an obelisk erected at 800ft. above sea level. Another tower, also probably erected for decorative purposes, stands on high land at Ravenscliffe Road. This tower would seem to have been built at about the same time as Mow Cop Castle circa 1750. It is 670ft. above sea level. Also of interest is the old stone cross at Talke to which reference has already been made.

KIDSGROVE PRESENT

Kidsgrove is at the northern end of the North Staffordshire conurbation of Stoke-on-Trent and Newcastle-under-Lyme. It is bounded on the north side by the County of Cheshire and marks the northern end of the densely populated and highly industrialised potteries valley. It has the advantage of the fine open countryside in Cheshire in close proximity and is at the foot of the magnificent hill country of the Staffordshire and Derbyshire Peak District. Crewe is nine miles away to the west, and Congleton six miles north. The facilities of these towns and those of the Potteries are readily accessible. The district is well served in the matter of transport. Two main rail lines of London/Midland Region pass through Kidsgrove, one route being the Manchester, Stoke, Euston, and the other the Crewe, Stoke/Derby line. The local services on these lines are by diesel trains and are now both frequent and fast. The Potteries Motor Traction Co. Ltd. operate bus services throughout Kidsgrove and provide communication through the towns of Stoke-on-Trent and Newcastle-under-Lyme. Services also cover Alsager, Congleton, Crewe and Sandbach. Two main trunk roads, the A34 and the A50 pass through the district and provide excellent road communication. The M6 Birmingham/Preston Motorway passes within 3 miles of the town and there is a feeder road to it from Talke which provides easy access.

Kidsgrove today is very largely a modern town of comparatively recent development. The older houses and most of the commercial parts of the district are however of Victorian origin. In the late 1920's and the 1930 decade, the town suffered badly as a result of the depression in the mining and pottery industries. As a result, development was severely retarded during this period resulting in a depreciation of both dwelling houses and shopping facilities. It was not until the

early years after the Second World War that a re-development of the district could proceed with any pace. Since 1946 however, many new industries have been brought into the Town, the population has expanded from some 14,000 to the present figure of nearly 23,000. Many new housing estates have been built through the district both by the Council and private enterprise. A number of the older unsatisfactory types of houses have been swept away and a new town has virtually been erected, and development proposals are at present going forward to complete this work. These proposals include the provision of a new shopping centre and the completion of the task of clearing the sub-standard houses in the district and replacing them with modern estates. Side by side with this building programme the Council has carried out schemes for improving the appearance of the district where this has been spoilt by the remains of old colliery workings. Many areas have been landscaped and trees planted and there are further schemes of this nature to be carried out in the future.

Industry

The district has a fully developed industrial estate at West Avenue, Talke, named the Nelson Industrial Estate. This estate was started in 1948. The largest factories on the estate are those of the G.E.C. Elliot Automation and International Computers Ltd., the former being engaged in the production of electronic switchgear and the latter in the production of computers and computer services.

Also on the estate are textile factories including G. H. Heath and Company Ltd. engaged in nylon throwsting and Talke Fashions where children's dresses and blouses are manufactured. Twinlock Fidgeon Ltd. manufacture data processing equipment and these together with other small firms have completed the development of the entire estate.

The Council has now commenced the development of some 60 acres of land in the Talke area of which about 45 acres will be available for industrial use. This site adjoins a feeder road to the M6 Motorway and arrangements have been made to give every assistance possible to those who are interested in providing industrial premises there. The possibility of extending this estate is under consideration. Walkers Century Oils have erected a large oil storage depot within the confines of this area.

Industrial organisations also operate in other parts of the district. These local industries include Premier Artificial Stone Company Limited who manufacture precast concrete slabs, kerbs, etc., Talke Chemical Company Limited, manufacturers of paint etc., Hillside Foundry Company Limited, general iron foundries, Birchenwood Brick and Tile Company Limited and Mow Cop Brick Works, North Staffs, Hydraulics and Walker and Squires Sheet Metal Works.

A number of factories make tiled fireplaces.

Mathey Printed Products Ltd. (a subsidiary of Johnson Mathey Ltd.) make pigments for the paint and plastic industries and ceramic colours.

Other firms engaged in the textile industry are W. A. Lowe and Company and Pirie Sons and Co. Ltd.

W. & A. LENCH BROS.

EST. 1946

Partners: W. Lench, A. Lench, J. W. Lench

**REGISTERED PAINTING AND
DECORATING CONTRACTORS**

QUOTATIONS FOR ARTEX PLASTIC CEILINGS
ON REQUEST

**SKELLERN STREET, BUTT LANE
KIDSGROVE, STOKE-ON-TRENT**

Telephones: **KIDSGROVE 3449**

STOKE-ON-TRENT 87907

Public Services

EDUCATION

MARYHILL COMPREHENSIVE SCHOOL

Headmaster: Mr. W. Reddish, B.Sc.

The school was opened as a small Grammar School in 1960 and enlarged as a Comprehensive School in 1963. It stands on a site of eight acres and has playing fields of 17½ acres. The teaching accommodation includes a large hall with a fully equipped stage, gymnasium, four science laboratories, practical rooms for Handicrafts and Home Economics, and for Art and Crafts, a modern language laboratory, library together with spacious classrooms, staff room and administration offices. A new block containing workshops and vehicle maintenance bay will be completed in 1973.

There are now 700 pupils in school including a Sixth Form of 30, and a staff of 40 teachers. The school offers a comprehensive range of courses for pupils of all abilities including courses leading to the Certificate of Secondary Education and the General Certificate of Education at all levels. Each year Sixth Form pupils enter Universities, Training Colleges, Technical Colleges and professions.

Out-of-classroom activities are an essential part of the school's work, and in addition to games and athletics the School Outdoor Club and Dramatic Society are especially active. A Parent Teacher Association which was formed in 1961 gives substantial support to the School.

CLOUGH HALL COMPREHENSIVE SCHOOL

Headmaster: Mr. J. O. Murphy

This is a Comprehensive School which is now fully developed and provides courses for boys and girls from 11 to 18 years of age at all levels of ability. Every year a large number of pupils are entered for the General Certificate of Education at 'O' and 'A' level and for the Certificate of Secondary Education.

Good facilities are available for the teaching of all subjects and each year students proceed to Universities, Colleges of Education and Polytechnics.

The accommodation of the school has been modernised, a complete new central section is now in use, there are well equipped laboratories for all branches of Science and a Language Laboratory of the very latest design. Further building is now in progress which will complete the provision of the most modern teaching accommodation and facilities throughout the school.

A new playing field site is being developed alongside the Newcastle Road at Talke.

There is a strong and active Parent Teacher Association and the interest of parents in the work of the School is warmly welcomed. The School Sailing Club, Opera and Dramatic Societies and the Choir are much appreciated in the area.

Further Education

Kidsgrove Evening Institute is accommodated at Clough Hall Comprehensive School with additional classes at the Maryhill Comprehensive School, Thursfield School, HARRISEAHEAD, and the Reginald Mitchell School, Butt Lane. It provides a wide range of commercial, technical and recreational classes. Students take the examination of the Royal Society of Arts, Union of Educational Institutions, and those providing a link with and set by the North Staffordshire Technical College. Detailed information can be obtained from the Head Teacher at Clough Hall Comprehensive School.

A wide variety of part-time day release classes and full-time day classes is available to the area at the North Staffordshire Technical College, College Road, Stoke-on-Trent. There are departments in engineering, mining, ceramics, chemistry, physics, and catering and food technology. Facilities are also available at Newcastle College of Further Education at Newcastle-under-Lyme.

Primary Schools

There are 13 Primary Schools in the district. Four



THE NEW ROMAN CATHOLIC SCHOOL, GLOUCESTER ROAD

are new or have had extensive additions or improvements: Dove Bank County Primary; Kinnersley Memorial Church of England Junior (Juniors only); Wade Memorial Church of England Infants (Infants only); Maryhill County Primary; St. John's Roman Catholic; The Reginald Mitchell County Primary, Butt Lane; Hill Top County Primary, Talke; Springhead County Primary, St. Martin's Church of England Infants, Talke (Infants only); St. Saviour's Church of England, Talke; Thursfield County Primary, HARRISEAHEAD; Castle County Primary, Mow Cop. A new Roman Catholic School is at Gloucester Road.

Nursery Schools

Kidsgrove Nursery School, Wesley Street, Kidsgrove; Banbury School, St. Saviour's Street, Butt Lane.

Youth Services

There is a wide range of voluntary youth clubs throughout the district and at Clough Hall Comprehensive School a youth centre has been erected which provides many facilities for recreation. Youth club premises have also been built at Maryhill and Whitehall Avenue, Kidsgrove. Facilities for young people are also provided in a number of schools.

Careers Information

Although pottery and coalmining predominate in North Staffordshire within the district the occupational structure of the Kidsgrove area is based upon the engineering and clothing manufacturing industries and it is to these two industries that many school leavers look to provide them with employment.

In engineering boys are primarily concerned with obtaining apprenticeship training and here, while some have also been built at Maryhill and Whitehall Avenue, 15 year olds are accepted for craft training, the tendency is for firms to prefer to recruit boys who have remained at school at least for a further year to take the Certificate of Secondary Education examination and who have some ability in mathematics, science and practical subjects. Limited openings are available for boys of lower academic ability in semi-skilled occupations. For the older school leaver who has taken the G.C.E. 'O' level examination or has C.S.E. Grade 1 passes especially in mathematics and physics, technician and drawing office apprenticeships are available while the larger firms also recruit G.C.E. 'A' level candidates and university graduates for still higher level training. Some opportunities for girls occur in production and in clerical work, particularly for those with a sound general education and some commercial training. It is sometimes necessary for some suitable candidates for engineering training to take employment in adjoining areas.

Clothing manufacture offers openings with on-the-job training for many local school leavers in the 15-16

years of age bracket, and is the largest single employing industry for girls. Some opportunities to work in design occur from time to time for girls with an artistic bent and preferably with some art training. The nylon spinning industry also regularly recruits boys and girls (mainly 15 and 16 year olds) and other local opportunities in manufacturing industries are available in adjoining areas. Some boys each year either take mining apprenticeships or craft training in engineering within the mining industry.

Local opportunities for the older boy or girl school leaver, often with good G.C.E. 'O' or 'A' level qualifications are confined in the main to careers with large firms in the industrial field and comparatively few vacancies are available with commercial concerns, professional offices or in local or national government departments. It is inevitable, therefore, that some pupils and students seeking employment openings with professional training in these latter categories must perforce look for it beyond the immediate neighbourhood.

Every year the numbers of boys and girls who take up full-time or part-time educational and/or vocational training courses on leaving school continue to grow. Part-time day release and block release courses and off-the-job training in a very wide range of skilled occupations is available at the Newcastle College of Further Education, the Northern College of Further Education, Burslem; the College of Building and Commerce, Shelton; the Elms Technical College and Leek College of Further Education (particularly for textile students). These Colleges, too, offer full-time courses leading to vocational/professional qualifications of many kinds while the North Staffordshire Polytechnic caters for the requirements of the more advanced students in courses up to degree level. Art courses are available at Stoke-on-Trent, Burslem and Newcastle and in Kidsgrove itself the Evening Institute, held at the Clough Hall Comprehensive School, offers a variety

of classes of educational, vocational and recreational value.

The North-West Division of the Staffordshire Youth Employment Service provides a statutory careers advisory service freely available to all pupils, students and to parents of young people resident in the Kidsgrove area, and the local Careers Office is situated in the grounds of Clough Hall Comprehensive School, First Avenue, Kidsgrove. The service aims to provide information about careers of all kinds, whether of purely local or of wider application, to give vocational guidance to pupils and students of all ranges of ability, to place young workers in suitable employment (and, of course, to offer a placement service to employers) and finally to review the progress of young workers during the first years of employment and help to solve difficulties encountered in the transition from school to work.

Telephone: Congleton 3241-4224

WHITTAKER & BIGGS

Auctioneers, Valuers and Estate Agents

Proprietors of
CONGLETON CATTLE MARKET —

Every Tuesday

**MOODY HOUSE, CONGLETON
CHESHIRE**

HEALTH SERVICES

The Staffordshire County Council provides the following services in the district.

Care of Mothers and Young Children

Infant Welfare Clinics are held at Valentine Road, Kidsgrove, Long Lane, Harriseahead and Cross House, Talke. In addition to the usual functions carried out at the Infant Welfare Centres the County Council also provides for the sale of infant and welfare foods. Mothercraft and Relaxation classes for expectant mothers are held on Wednesday afternoons weekly at the Kidsgrove and Harriseahead centres and on Thursday afternoons weekly at the Talke centre.

Midwifery Service

Four midwives are at present employed in the Urban District. The Services of these midwives are available to all expectant mothers.

Health Visiting Service

The five Health Visitors in the Urban District are trained nurses with additional qualifications for their work which includes visiting mothers and children up to the age of five years in their homes, care of babies and young children at the Infant Welfare Centres, and care of old people, and care of school children under the School Health Service.

Home Nursing Service

There are four district nurses in the Urban District and their services are normally available at the doctor's request.

Vaccination and Immunisation

Facilities are available through family doctors, Infant Welfare Centres and Schools in the Urban District for the vaccination against Smallpox and immunisation against Diphtheria, Whooping Cough, Tetanus, Polio-

myelitis and Measles. Vaccination against Rubella (German measles) is now available for girls between 11 and 14 years of age. B.C.G. vaccination against Tuberculosis is available under the School Health Service. Such vaccination and immunisation is free of charge.

Other Services

These include the provision of an ambulance service, a chiropody service for handicapped persons, old people, expectant mothers and school children, a nursing comforts depot where medical and nursing equipment is available.

Health Centre

A new health centre will open this year at Market Street, Kidsgrove, which will provide comprehensive medical services.

Doctors in the Kidsgrove Urban District

Drs. C. E. Durber and M. Naeem:

120 High Street, Talke Pits, Stoke-on-Trent.
Telephone: Kidsgrove 2440.

Drs. J. C. Friel, H. J. Moss, and B. R. Pratap:
2 Queen Street, Kidsgrove, Stoke-on-Trent.
Telephone: Kidsgrove 2695.

Drs. D. G. French and A. F. Hickson:
'Ravenswood', The Avenue, Kidsgrove, Stoke-on-Trent.
Telephone: Kidsgrove 2549.

Dentists in the Kidsgrove Urban District

Mr. R. O. Whalley:
79 Liverpool Road, Kidsgrove, Stoke-on-Trent.
Telephone: Kidsgrove 2520.

LIBRARY FACILITIES

The Staffordshire County Council provide the following service points within the Urban District.

1. Regional Library, Meadows Road, Kidsgrove.
Phone No. Kidsgrove 2445.

Providing Adult and Junior Lending Departments, Reference Library with seating accommodation for 20 students. Gramophone Record collection. Meeting room for Exhibitions, lectures, etc.

Opening Hours

Monday	9 a.m. - 1 p.m.	2 p.m. - 6 p.m.
Tuesday & Friday	9 a.m. - 1 p.m.	2 p.m. - 8 p.m.
Wed. & Thurs.	9 a.m. - 1 p.m.	2 p.m. - 5 p.m.
Saturday	9 a.m. - 1 p.m.	

2. County Branch Library, Chester Road, Talke Pits.
Phone No. Kidsgrove 2200.

Providing Adult and Junior Lending Departments, and Reference facilities.

Opening Hours

Monday & Friday	10 a.m. - 1 p.m.	2 p.m. - 8 p.m.
Tue., Wed., Thurs.	10 a.m. - 1 p.m.	2 p.m. - 6 p.m.
Saturday	10 a.m. - 1 p.m.	

3. Caravan Library.

Harriseahead—Thursfield School

Each Monday ...	10.45 - 1 p.m.	2 p.m. - 6.45 p.m.
Mow Cop—Car Park of Ash Inn		
Each Tuesday ...	10.00 - 1 p.m.	2 p.m. - 6.00 p.m.

Books and Gramophone Records not in stock at any service point will be supplied through the headquarters library in Stafford.

SPORT AND RECREATION

Bathpool Park

Within the Urban District is the natural park of Bathpool which consists of a wooded valley extending to over 165 acres with a lake. The lake which has attracted various species of water fowl, is used for canoeing, sailing and angling. Many acres of the park are available for picnicking and walks, the Council having constructed various forms of forest furniture as an added attraction.

Progress is being made on the development of the park with the provision of football pitches, multipurpose games area catering for 5-a-side Football, Netball and Volley Ball and the recently constructed ski centre.

Ski Centre

The Ski Slope is one of the largest in England offering the following facilities:—

- (a) 500 ft. of Ski Run.
- (b) 200 ft. Toboggan Run.
- (c) Over 2,500 sq. yds. of Run.
- (d) Floodlighting.
- (e) Ski Tow.
- (f) Changing and Refreshments.

The users of the slope are expected to be drawn from within a very large catchment area.

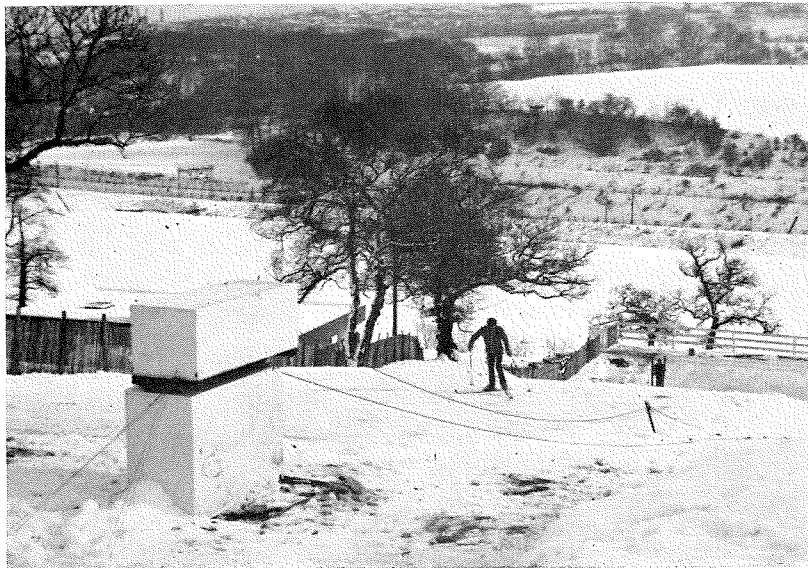
Clough Hall Park

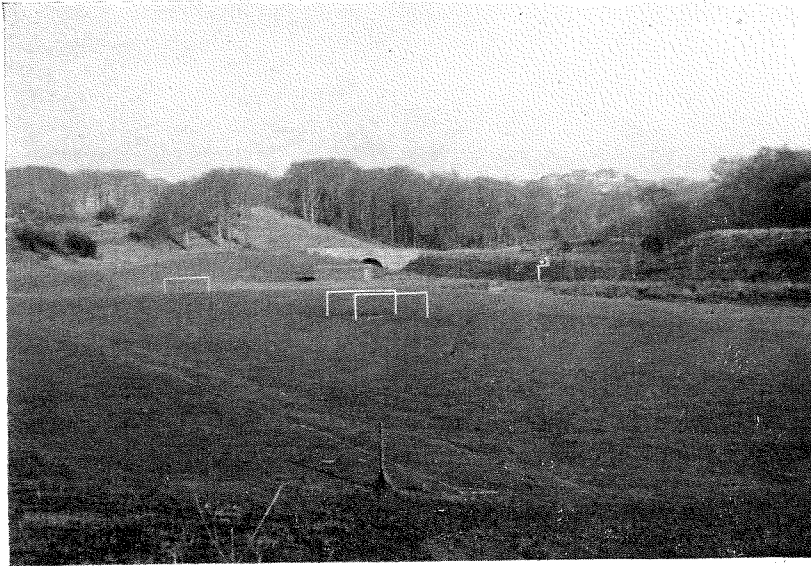
The other outdoor ground for organised recreation is at Clough Hall. A cricket field and football field have been long established and there are also hard tennis courts and a putting green. Two Crown Bowling Greens are also available. There is also a pavilion and band stand and an area with children's playing equipment. Smaller playing fields are spread throughout the district at Mow Cop, HARRISEAHEAD, Rookery, Butt Lane and Talke and these grounds have children's playing apparatus. Football fields are provided at



THE NEW PAVILION AND SKI-LODGE, BATHPOOL

THE ARTIFICIAL SKI SLOPE





COUNCIL FOOTBALL FIELDS AT BATHPOOL
THE NEW PLAYING FIELD AT SALOP PLACE



Harriseahead, Talke, Whitehill and a further two in Kidsgrove. A company sports ground is provided by the G.E.C. Elliot Automation I.C.L. Group for their employees. There are also a number of private bowling greens in the district.

Sport Centre

Progress is now being made on the Centre with a completion date in the proximity of March 1974. The facilities which will be offered are as follows:

- (a) Swimming Pool (25m. x 12.8m.)
- (b) Teaching Pool (12m. x 7m.)
- (c) Sports Hall (36m. x 18m.)
- (d) Changing Rooms
- (e) Sauna Suite and Solarium
- (f) Licensed Bar and Club Room
- (g) Catering Facilities
- (h) Squash Courts (Future Construction)

When open the Centre will be able to cater for many and varied activities.

Fradley

Craftsmen-built homes in select areas at sensible prices, backed by the NHBRC 10-year Guarantee, with excellent mortgage facilities and advice on the sale of your present home. For full details visit the Fradley Home Centre at the address below.

F. FRADLEY & SON LIMITED

(Inc. B. J. F. Developments Ltd.)
Fradley House, Hope Street,
HANLEY, STOKE-ON-TRENT
Office Tel: S-O-T 24021



THE ISLAND BATHPOOL

BATHPOOL WHERE FISHING IS AVAILABLE



OTHER FACILITIES

Using Kidsgrove as a base there are very few pursuits that cannot be actively followed within the town and its neighbouring districts, with the obvious exception of marine interests which require a one hour car journey.

Angling and pigeon flying are notable local pastimes; It is not far to Izaak Walton Country. Canal, reservoir and river fishing is readily available. Archery is well established at Sandbach and athletics is a fast expanding field. There are three Badminton Clubs in the area, league badminton is played in North Staffs, and South Cheshire. Several bowling clubs thrive locally and there is a Bridge Club at Linley that meets weekly during the winter. For those who prefer to be out of doors the North Staffs. Beagles meet regularly and are well supported.

The predominant cricket club in the area is the very old established Kidsgrove Cricket Club, a member of the North Staffordshire League. County Cricket matches are played at a nearby ground in the City of Stoke-on-Trent. Climbing in the Peak District—cruising on the canals—there is a well equipped basin in Nantwich — and cycling provide varied out-door interests.

The town is well placed for professional association football, the grounds of Stoke City F.C., Port Vale F.C. and Crewe F.C. being within easy reach. Amateur football has a large following, and there are several good clubs within the area, of which the principal one is Kidsgrove Athletic, who play in the Mid Cheshire League.

Golf courses are available at Astbury, Burslem, Congleton, Crewe, Newcastle, Trentham and Wolstanton. Gliding is popular at Meir on the south side of the City.

Hockey is played in North Staffordshire and the North Staffs. Hunt meets regularly. Horse riding stables are available. Mucklestone is famous for its Point to Point. National Hunt race meetings are held at Uttoxeter and Alsager holds an annual Gymkhana.

Ice Skating is a sport that requires a little more determination and the nearest rink is situated at Altrincham, Judo and Karate are practised at several established centres in the City. Motor car and motor cycle racing take place at Oulton Park, about twenty miles away, which provides ideal surroundings for these spectacular events. Motor cycle scrambles are held at several notable local centres including Betley and Hawkstone Park.

Rugby Union has a keen following, there are a number of well supported Old Boys teams apart from the Stoke-on-Trent R.U.F.C. and several good local club sides.

There are several swimming baths in the City and one at Newcastle, Crewe and Biddulph. Open air pools are available at Congleton, Market Drayton and Trentham. Water polo is a very popular sport locally. Sub Aqua is growing in esteem and water ski-ing is gaining a firm hold. Sailing has long been established in the region, the nearest centres being at Rudyard and Doddington. The scope for shooting is admittedly limited but there is an active rifle club at Sandbach.

With the wealth of local beauty spots, it is of no surprise that walking has always been a firm favourite, notable areas being Dovedale and the Roaches but there are many others well worth finding.

It has not been attempted to list all the activities followed in the districts surrounding Kidsgrove, but it is hoped the impression that most pursuits are available, has been created.

ENTERTAINMENT

The Town Hall provides facilities for dancing and there is also a stage which can be used for the production of plays, etc. There is a Masonic Hall and a number of Clubs, many newly erected. Hanley (five miles distant) has modern cinemas and a ten pin bowling centre.

Within the city there are a number of Drama and Operatic Societies. Professional drama is provided by the Victoria Theatre Group at Hartshill which is well known nationally.

PUBLIC UTILITY SERVICES

The district is covered by the usual public utility services, electricity being provided by the Midlands Electricity Board, gas by the West Midland Gas Board, and water, by the Staffordshire Potteries Water Board. The Council has recently constructed modern activated sludge sewage disposal works, outside the district.



Regular Bus
Services from

KIDSGROVE

to THE POTTERIES, CREWE, CONGLETON, etc.

Major Picking up point for Tours, Excursions and Express Services including Saturday MANCHESTER Service.

Local Booking Agents :
Mr. S. Hadgett
45 Liverpool Rd., Kidsgrove

A. & E. Morris
105 Congleton Rd.,
Butt Lane

THE POTTERIES MOTOR TRACTION CO. LTD.

Stoke-on-Trent

Tel. 48811



NEW COUNCIL DEVELOPMENT AT ROOKERY, KIDSGROVE

HOUSING

The Council has built 1970 houses, flats and bungalows. It has also provided a welfare bungalow scheme for the old and infirm together with a community centre. At present there are plans for further housing development on sites cleared of substandard dwellings and 273 houses are under construction or planned. Up to the present time 2239 private houses have been erected in the district since the war. There are a number of estates and sites at present being developed and planned and over 300 are under construction in attractive wooded areas at Ravencliffe, Talke and Newchapel. The Council assists home ownership by making mortgage loans available to house purchasers. It is also prepared to guarantee loans made by building societies and grants and loans are also made for the improvement of older property.

The Council has also undertaken large scale improvement schemes for all its Council houses both pre-war and post-war to bring them to near Parker Morris standard by 1974.

General Information

AREA: 4,137 acres.

BANKS: Barclays, Liverpool Road, Kidsgrove and Congleton Road, Butt Lane.

National Westminster, Liverpool Road, Kidsgrove.
North Staffordshire Trustee Savings Bank, King Street, Kidsgrove.

CAR PARKS: King Street, The Avenue and Market Street, Station Road.

CENTRAL LIBRARY: The Avenue (A comprehensive list of organisations and events is available).

CITIZENS' ADVICE BUREAU: 1 Queen Street (2 p.m. to 4 p.m.).

COUNCIL MEETINGS: Thursdays (6.30 p.m.) at the Council Chamber, Town Hall. 6 weekly cycle.

COUNCIL OFFICES: Town Hall.

DISTANCES: London 155, Stoke-on-Trent 6, Newcastle-under-Lyme 6, Congleton 7, Crewe 9, Manchester 32, Birmingham 55.

EDUCATION: See page 13.

EMPLOYMENT EXCHANGE: The Avenue.

POST OFFICE: The Avenue.

PARLIAMENTARY CONSTITUENCY: Leek, Member: D. Knox, c/o House of Commons, London, S.W.1.

PLACES OF WORSHIP:

Church of England

St. Thomas (Mow Cop), Mow Cop.

St. James, Newchapel.

St. Thomas, The Avenue.

St. Martins, Crown Bank, Talke.

St. Saviour's, Rookery.

Roman Catholic

St. John, The Avenue.

Methodist

Central Methodist, The Avenue.
King Street, Talke Pits.
Chapel Street, Butt Lane.
High Street, Newchapel.
Whitehill, Kidsgrove.
Balls Bank, Whitehill, Kidsgrove.
Chapel Lane, Harriseahead.
Chapel Bank, Mow Cop.

Baptist

Church Street, Butt Lane.

Christian Brotherhood

Ebenezer Hall, Banbury Street, Butt Lane.

Pentecostal Mission

Mow Cop

POLICE STATION: Liverpool Road.

POPULATION: 22,290 (mid 1971).

RATEABLE VALUE: £1,838,576.

RATES: 34p in the £.

REGISTRAR OF BIRTHS, DEATHS AND MARRIAGES: Infant
Welfare Clinic, Liverpool Road.

YOUTH EMPLOYMENT CENTRE: Clough Hall Compre-
hensive School.

Other Organisations

ROTARY CLUB OF KIDSGROVE: Masonic Hall (meets
Wednesdays 1 p.m.).

WOMEN'S ROYAL VOLUNTARY SERVICE: W.R.V.S. Centre,
Congleton Road, Butt Lane.

TOC H: c/o Kidsgrove Library.

THE COUNTRY CODE

Those who do not fully understand the country way of life can easily do harm by thoughtless and careless actions. For example, it is not sufficiently realised that a gate left open will invite animals to stray from their field: they may then damage crops or suffer harm themselves, or involve you in an accident. The unsightliness of litter left discourteously behind all too often spoils the beauty of a scene for others: some may cause painful injury to humankind and animals, or damage costly farm machinery. So when you are out and about in country places please follow these rules for good country behaviour from the Country Code prepared by the National Parks Commission:

Guard Against All Risk of Fire.

Fasten All Gates.

Keep Dogs Under Proper Control.

Keep to the Paths Across Farm Land.

Avoid Damaging Fences, Hedges and Walls.

Leave No Litter.

Safeguard Water Supplies.

Protect Wild Life, Wild Plants and Trees.

Go Carefully on Country Roads.

Respect the Life of the Countryside.

EVERYTHING FOR THE HOME !
ERIC ALCOCK LTD.
59 Liverpool Rd., Kidsgrove

Complete Home Furnishers

See Our Extensive Range of

3-PIECE SUITES - BEDROOM FURNITURE
CHINA CABINETS - HALL WARDROBES
KITCHEN FITMENTS - OCCASIONAL TABLES
FLOOR COVERINGS - RUGS - CARPETS
BEDDING - MATTRESSES - ETC.

Cash or Confidential Terms to suit You !

Phone: KIDSGROVE 2714

ALWAYS FIRST WITH THE LATEST . . .
in HOME ENTERTAINMENT and
the newest ELECTRICAL AIDS
COLOUR TV RENTALS

ERIC ALCOCK LTD.

9 THE AVENUE

26 LAWTON RD.

KIDSGROVE

ALSAGER

Phone 2714

Phone 3073

Service Dept. 4 Meadows Road, Kidsgrove. Phone 3788

Agents for all leading Manufacturers
TELEVISION - RADIO - TAPE RECORDERS
STEREOGRAMS - RECORD PLAYERS
WASHING MACHINES - CLEANERS